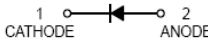


Features

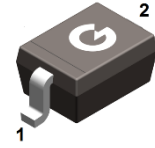
- Fast switching speed
- High conductance

HF



Mechanical Data

- Case: SOD-323
- Molding Compound: UL Flammability Classification Rating 94V-0
- Terminals: Matte tin-plated leads; solderability-per MIL-STD-202, Method 208



SOD-323

Ordering Information

Part Number	Package	Shipping Quantity	Marking Code
BAS16H	SOD-323	3000 pcs / Tape & Reel	A6

Maximum Ratings (@ T_A = 25°C unless otherwise specified)

Parameter	Symbol	Value	Unit
DC Blocking Voltage	V _R	75	V
Forward Continuous Current	I _F	200	mA
Non-Repetitive Peak Forward Surge Current, t = 1ms	I _{FSM}	1	A
Non-Repetitive Peak Forward Surge Current, t = 1s		0.5	A

Thermal Characteristics

Parameter	Symbol	Value	Unit
Power Dissipation	P _D	200	mW
Thermal Resistance (Junction-to-Ambient) *1	R _{θJA}	410	°C/W
Thermal Resistance (Junction-to-Case) *1	R _{θJC}	220	°C/W
Thermal Resistance (Junction-to-Lead) *1	R _{θJL}	210	°C/W
Operating Junction Temperature Range	T _J	-55 ~ +150	°C
Storage Temperature Range	T _{STG}	-55 ~ +150	°C

Note 1: The data tested by surface mounted on a 15mm * 15mm * 1mm FR4-epoxy P.C.B

Electrical Characteristics (@ $T_A = 25^\circ\text{C}$ unless otherwise specified)

Parameter	Symbol	Test Condition	Min.	Typ.	Max.	Unit
Reverse Breakdown Voltage	$V_{(BR)R}$	$I_R = 100\mu\text{A}$	75	-	-	V
Forward Voltage	V_F	$I_F = 1\text{mA}$	-	-	0.715	V
		$I_F = 10\text{mA}$	-	-	0.855	V
		$I_F = 50\text{mA}$	-	-	1.000	V
		$I_F = 150\text{mA}$	-	-	1.250	V
Maximum Peak Reverse Current	I_R	$V_R = 75\text{V}$	-	-	1	μA
		$V_R = 25\text{V}, T_J = 125^\circ\text{C}$	-	-	30	μA
		$V_R = 75\text{V}, T_J = 150^\circ\text{C}$	-	-	50	μA
Total Capacitance	C_J	$V_R = 0\text{V}, f = 1.0\text{MHz}$	-	-	2	pF
Reverse Recovery Time	t_{rr}	$I_F = I_R = 10\text{mA}$ $I_{rr} = 0.1 \times I_R, R_L = 100\Omega$	-	-	5	ns

Ratings and Characteristics Curves (@ $T_A = 25^\circ\text{C}$ unless otherwise specified)

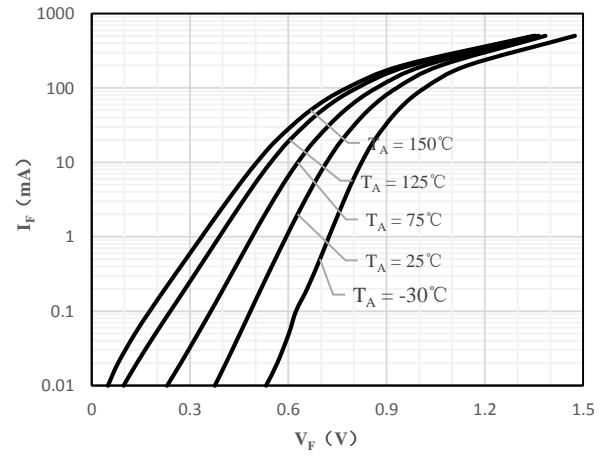
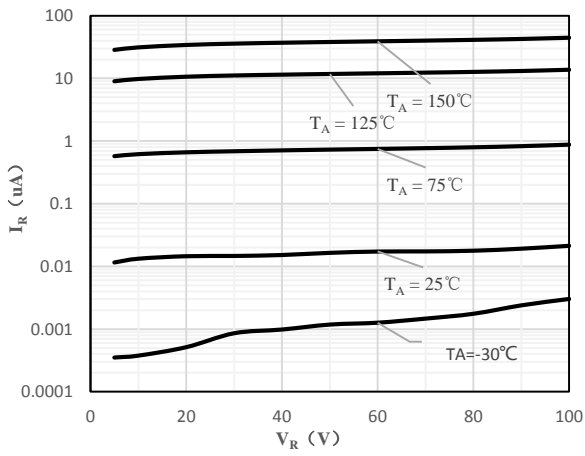


Fig 1 Typical Reverse Characteristic

Fig 2 Typical Forward Characteristics

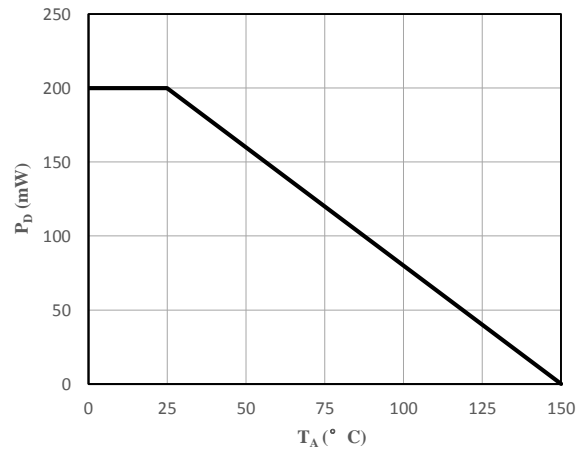
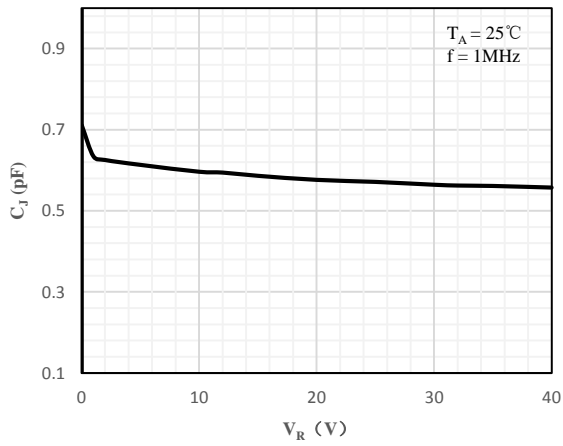
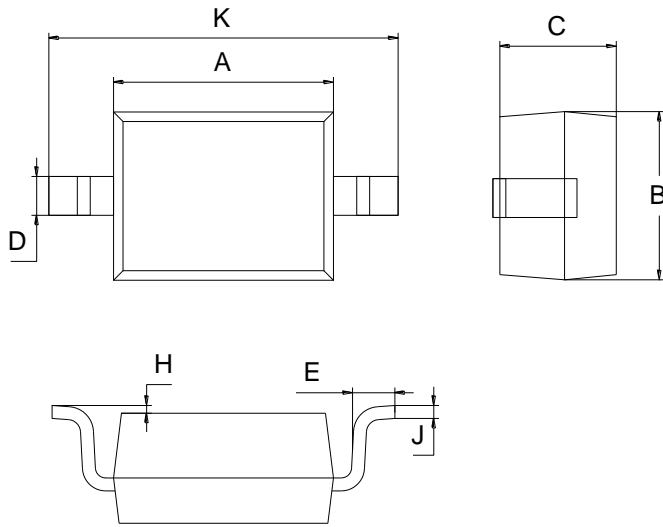


Fig 3 Capacitance vs. Reverse Voltage

Fig 4 Power Derating Curve

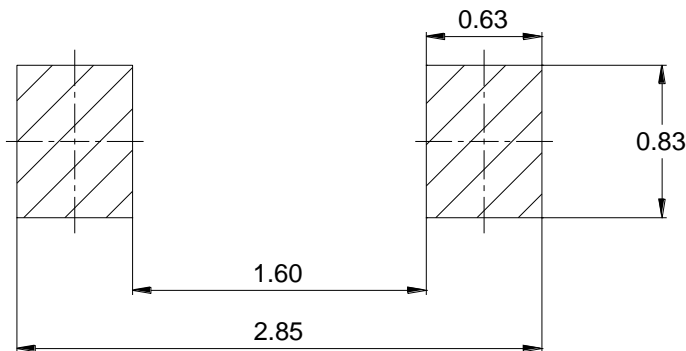
Package Outline Dimensions (Unit: mm)



SOD-323		
Dimension	Min.	Max.
A	1.60	1.80
B	1.20	1.40
C	0.80	0.90
D	0.25	0.35
E	0.22	0.42
H	0.02	0.10
J	0.05	0.15
K	2.55	2.75

Mounting Pad Layout (Unit: mm)

SOD-323



Important Notice

Changzhou Galaxy Century Microelectronics (GME) reserves the right to make changes without further notice to any product information (copyrighted) herein to make corrections, modifications, improvements, or other changes. GME does not assume any liability arising out of the application or use of any product described herein; neither does it convey any license under its patent rights, nor the rights of others.