

### FAST RECOVERY RECTIFIERS

VOLTAGE RANGE: 100 --- 1000 V  
CURRENT: 5.0 A

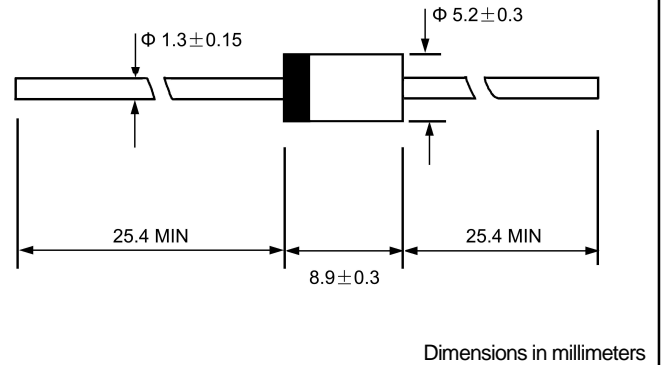
#### FEATURES

- ◇ Low cost
- ◇ Diffused junction
- ◇ Low leakage
- ◇ Low forward voltage drop
- ◇ High current capability
- ◇ Easily cleaned with Freon, Alcohol, Isopropanol and similar solvents
- ◇ The plastic material carries U/L recognition 94V-0

#### MECHANICAL DATA

- ◇ Case: JEDEC DO-27, molded plastic
- ◇ Terminals: Axial lead, solderable per MIL-STD-202, Method 208
- ◇ Polarity: Color band denotes cathode
- ◇ Weight: 0.041 ounces, 1.15 grams
- ◇ Mounting position: Any

#### DO - 27



#### MAXIMUM RATINGS AND ELECTRICAL CHARACTERISTICS

Ratings at 25°C ambient temperature unless otherwise specified.

Single phase, half wave, 60 Hz, resistive or inductive load. For capacitive load, derate by 20%.

		BY500 -100	BY500 -200	BY500 -400	BY500 -600	BY500 -800	BY500 -1000	UNITS
Maximum recurrent peak reverse voltage	$V_{RRM}$	100	200	400	600	800	1000	V
Maximum RMS voltage	$V_{RMS}$	70	140	280	420	560	700	V
Maximum DC blocking voltage	$V_{DC}$	100	200	400	600	800	1000	V
Maximum average forward rectified current 9.5mm lead length, @ $T_A=75^\circ\text{C}$	$I_{F(AV)}$	5.0						A
Peak forward surge current 8.3ms single half-sine-wave superimposed on rated load	$I_{FSM}$	200.0						A
Maximum instantaneous forward voltage @ 5.0 A	$V_F$	1.3						V
Maximum reverse current @ $T_A=25^\circ\text{C}$ at rated DC blocking voltage @ $T_A=100^\circ\text{C}$	$I_R$	10.0 1000.0						$\mu\text{A}$
Maximum reverse recovery time (Note1)	$t_{rr}$	200						ns
Typical junction capacitance (Note2)	$C_J$	55						pF
Typical thermal resistance (Note3)	$R_{\theta JA}$	15						$^\circ\text{C/W}$
Operating junction temperature range	$T_J$	-55---- + 125						$^\circ\text{C}$
Storage temperature range	$T_{STG}$	- 55---- + 150						$^\circ\text{C}$

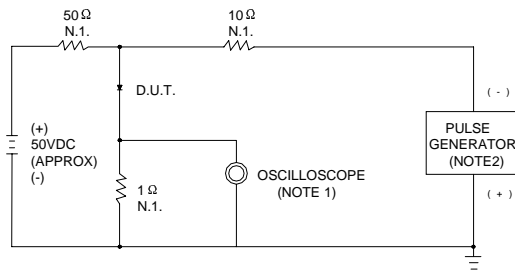
NOTE: 1. Measured with  $I_F=0.5\text{A}$ ,  $I_R=1\text{A}$ ,  $t_{rr}=0.25\text{A}$ .

2. Measured at 1.0MHz and applied reverse voltage of 4.0V DC.

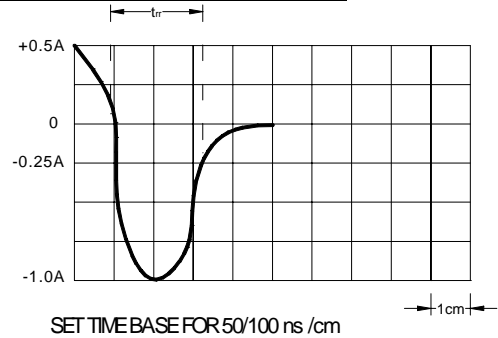
3. Thermal resistance from junction to ambient.

www.galaxycn.com

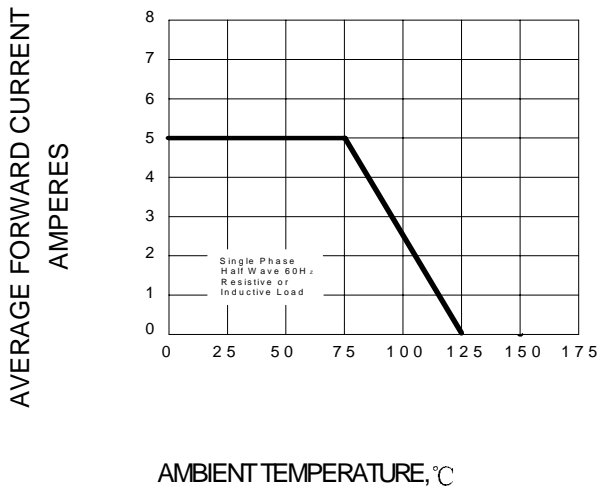
**FIG.1 – REVERSE RECOVERY TIME CHARACTERISTIC AND TEST CIRCUIT DIAGRAM**



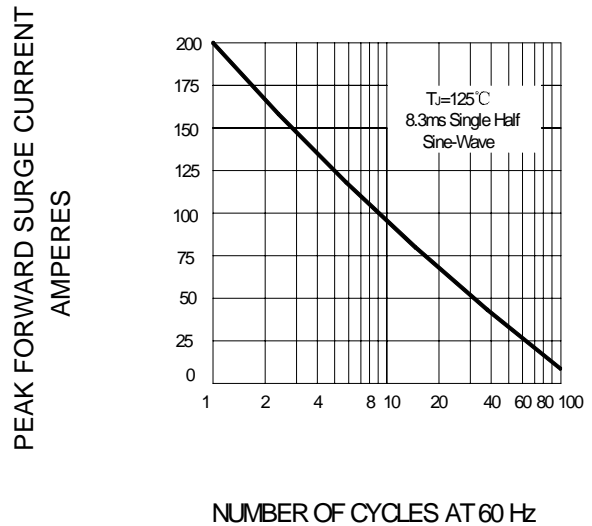
NOTES: 1. RISE TIME = 7ns MAX. INPUT IMPEDANCE = 1MΩ, 22pF  
 2. RISE TIME = 10ns MAX. SOURCE IMPEDANCE = 50Ω



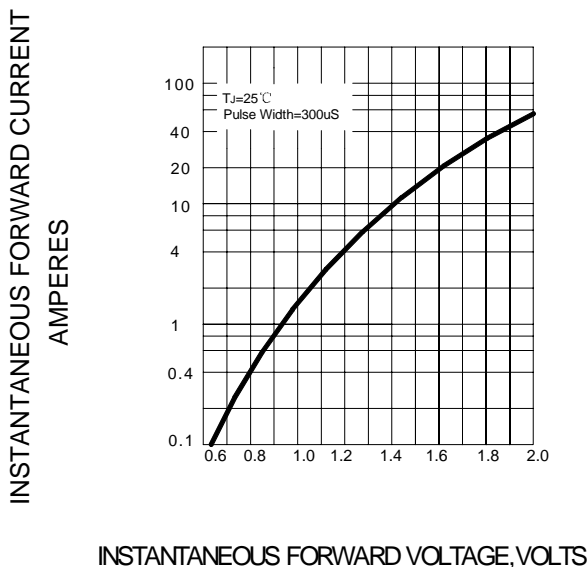
**FIG.2 – FORWARD DERATING CURVE**



**FIG.3 – PEAK FORWARD SURGE CURRENT**



**FIG.4 – TYPICAL FORWARD CHARACTERISTIC**



**FIG.5 – TYPICAL JUNCTION CAPACITANCE**

